

Courtesy Of Terry Paranych Of RE/MAX Excellence

\$899,000 - 7334 118a Street Nw, Edmonton

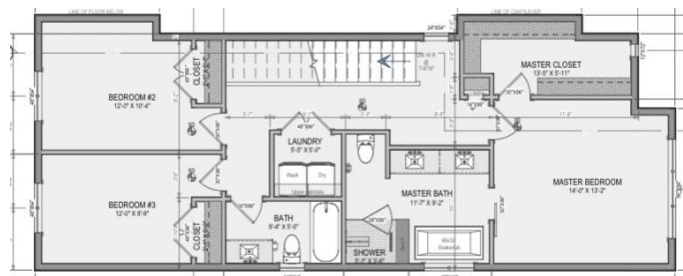
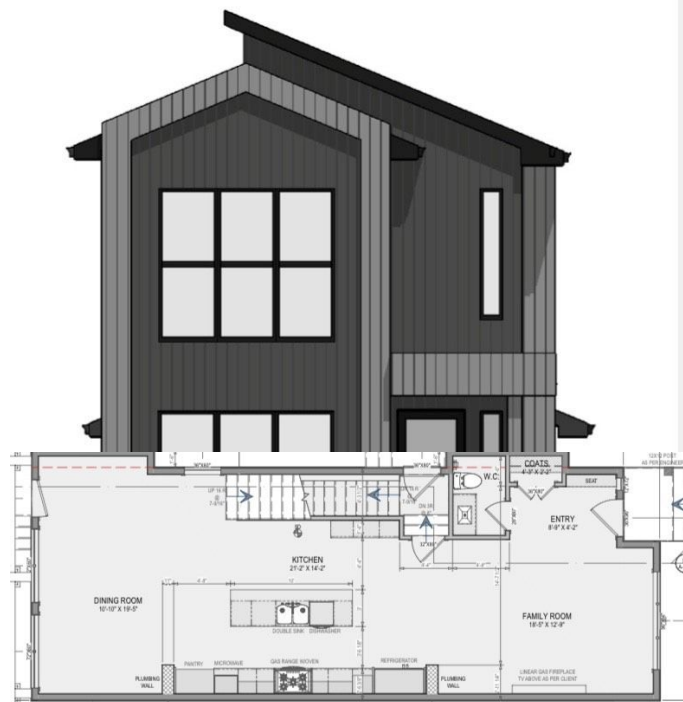
MLS® #E4220732

\$899,000

5 Bedroom, 4.00 Bathroom, 1,917 sqft
Single Family on 0 Acres

Belgravia, Edmonton, AB

Welcome to this brand new 1917 sq ft. infill in the heart of Belgravia! Walking distance from Saskatchewan Drive, the River Valley, UofA Hospital, and the LRT. This 2 story open concept home will feature 3 beds 2.5 baths and LEGAL BASEMENT SUITE with 2 bedrooms! The main floor features a family room with floor to ceiling windows for all the natural light you might need, a beautiful kitchen with a huge quartz island, and a dining room that leads out towards the FULLY LANDSCAPED backyard with a double detached garage. Upstairs, you will find the beautiful primary bedroom with a 5-piece ensuite and a large walk-in closet as well as two great sized rooms, a 3-piece bath, and a laundry room. The legal basement suite will have 2 bedrooms, a 3-piece bath, laundry and a huge family room to enjoy.



Built in 2020

Essential Information

MLS® #	E4220732
Price	\$899,000
Bedrooms	5
Bathrooms	4.00
Full Baths	3
Half Baths	1
Square Footage	1,917

Acres	0.08
Year Built	2020
Type	Single Family
Sub-Type	Residential Detached Single Family
Style	2 Storey
Status	ACTIVE

Community Information

Address	7334 118a Street Nw
Area	Edmonton
Subdivision	Belgravia
City	Edmonton
County	ALBERTA
Province	AB
Postal Code	T6G 1V2

Amenities

Features	Ceiling 9 ft., Tankless Hot Water, Secured Parking, Infill Property
Parking	Double Garage Detached
# of Garages	2

Interior

Interior	Carpet, Ceramic Tile, Engineered Wood
Interior Features	Dishwasher-Built-In, Dryer, Garage Control, Garage Opener, Hood Fan, Oven-Built-In, Oven-Microwave, Refrigerator, Stove-Countertop Electric, Washer
Heating	Forced Air-1
Bedrooms on Main Level	N
Has Basement	Yes
Basement	Full, Fully Finished
Fireplace	Yes
Fireplaces	Electric, Insert
# of Stories	3

Exterior

Exterior	Metal, Vinyl
Exterior Features	Back Lane, Low Maintenance Landscape, Playground Nearby, Schools
Roof	Asphalt Shingles
Construction	Wood Frame

Foundation Concrete

Listing information last updated on March 4th, 2021 at 9:16pm MST