

Courtesy Of Heather Malin Of RE/MAX Vision Realty

\$449,900 - 3825 52 Avenue, Drayton Valley

MLS® #E4249452

\$449,900

4 Bedroom, 3.00 Bathroom, 1,658 sqft
Single Family on 0 Acres

Drayton Valley, Drayton Valley, AB

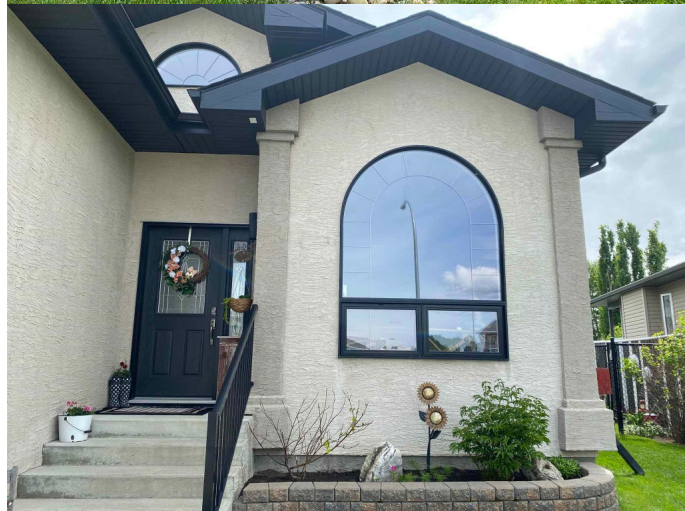
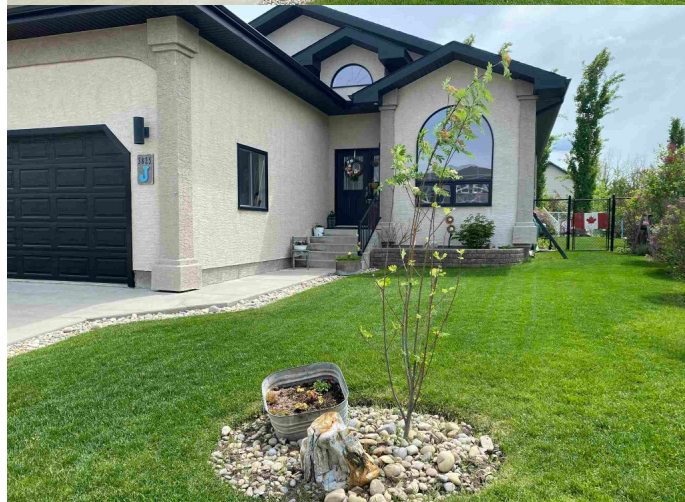
DON'T MISS THE OPPORTUNITY TO VIEW THIS GEORGIOUS DREAM HOME. Walking in you'll be amazed:- 9 ft. plus high vaulted ceilings. You see the kitchen, living room & dining room right to the back of home where you step out onto the deck, gazebo & into the meticulously landscaped fully fenced private yard! The den off the main entrance has double French doors. It's big enough to be a 3rd bedroom on the main floor if needed. The bedrooms are very large including the 2 downstairs. The kitchen has a walk-in pantry, island with breakfast bar, SS appliances, tile floor & granite counters throughout the home. The remaining of the main area & hallways is hardwood floors. The gas fireplace is surrounded by brick up to the high vaulted ceiling. An awesome feature for this home with space for the mounted TV above. There is a main floor laundry with SS appliances & cabinets. Ensuite has jacuzzi tub & separate shower. The wide open basement is done in vinyl plank, has a gas fireplace & under floor heat. This is a must see!

Built in 2010

Essential Information

MLS® # E4249452

Price \$449,900



Bedrooms	4
Bathrooms	3.00
Full Baths	3
Square Footage	1,658
Acres	0.00
Year Built	2010
Type	Single Family
Sub-Type	Residential Detached Single Family
Style	Bungalow
Status	ACTIVE

Community Information

Address	3825 52 Avenue
Area	Drayton Valley
Subdivision	Drayton Valley
City	Drayton Valley
County	ALBERTA
Province	AB
Postal Code	T7A 1T7

Amenities

Features	Ceiling 9 ft., Deck, Exterior Walls- 2x6', Vaulted Ceiling, Fire Pit, Gazebo, No Smoking Home, Vinyl Windows
Parking	Double Garage Attached
# of Garages	2

Interior

Interior	Carpet, Ceramic Tile, Hardwood
Interior Features	Dishwasher-Built-In, Dryer, Garage Control, Garage Opener, Microwave Hood Cover, Refrigerator, Storage Shed, Stove-Electric, Washer, Window Coverings, Vacuum System Attachments
Heating	Forced Air-1
Bedrooms on Main Level	Y
Has Basement	Yes
Basement	Full, Fully Finished
Fireplace	Yes
Fireplaces	Gas, Brick Facing
# of Stories	2

Exterior

Exterior	Stucco
Exterior Features	Fenced, Landscaped, Playground Nearby, Schools
Roof	Asphalt Shingles
Construction	Wood Frame
Foundation	Concrete

Additional Information

Zoning R1A - Low Density Resid.

Listing information last updated on September 18th, 2021 at 1:01pm MDT